

DIY RUSTIC VALENTINE'S DAY SIGN



HERE'S WHAT YOU NEED

- Black and Red Adhesive Vinyl
- Transfer Tape
- Weeding Tool
- Scraper
- Wood Pallet Sign (8" x 10" - found mine at Walmart)
- Wood for the Little Sign (6" x 1.5")
- Paint & Brushes
- Burlap Lace & Red Heart Ribbon (Found at Dollar Tree)
- Corrugated Metal Heart (Found at Dollar Tree)
- Rope
- Spanish Moss
- Electronic cutter (cricut explore, silhouette or other cutter)
- Cut File – **XOXO Heart BA2146** (available for free in my [resource library](#))

HERE'S WHAT YOU DO

STEP 1: DOWNLOAD THE FREE SVG FILE

The first thing you'll need to do is get the free SVG file you'll use for this project. I keep all the SVG files I use for the projects I make in my SVG Library. These SVG files work with Cricut and Silhouette machines, as well as many others. This library is open to everyone and is free! You can access the [library here](#). Look for the file called **XOXO Heart BA2146**. It will be listed under the Valentine category.

STEP 2: CUT AND TAPE VINYL DESIGN

Open the design in your software program and resize it to fit your small piece of wood. My wood piece measures about 6" across, so I resized the design to be about 5.25" wide.

When everything has been sized correctly, you can cut the designs with your Cricut or Silhouette.



Use a weeding tool to pull out the tiny pieces inside of the letters.



Cut a piece of transfer tape and place sticky side up on your surface, then place the vinyl on top of it and smooth it down.



Rub over the designs firmly with your scraper tool.



Then, trim off the excess transfer tape and vinyl backing.



STEP 3: PREPARE THE PIECES FOR THE SIGN

Sand your little wooden piece so it's nice and smooth. Then, paint on a couple coats of white paint and let that dry.



Dip a dry brush in some gray paint and dab most of the paint off.



Then, lightly drag the bristles across the wood. Let the paint dry completely.



Next, remove the vinyl backing from the black vinyl and carefully position it on the sign without pushing it down.



Then, do the same with the red heart. You might need to trim the transfer tape so it doesn't overlap the other piece. Adjust the vinyl so it looks straight and centered on the wood piece.

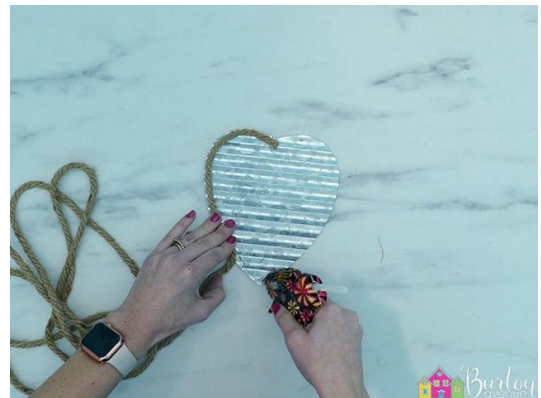
Once you're happy with the placement, rub over both designs.



Then, carefully pull off the transfer tape.



Use hot glue to attach some rope around the edge of the heart.



If you're using two types of ribbon, you'll also want to glue the smaller ribbon down the center of the larger ribbon.

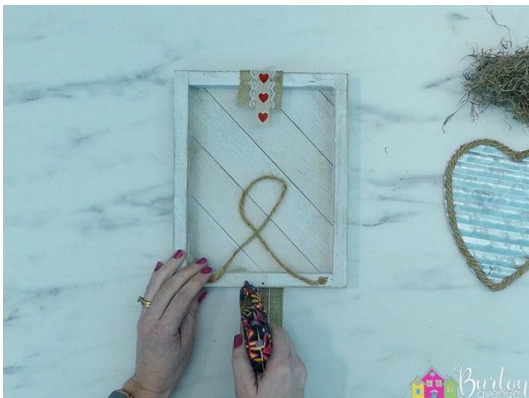


STEP 4: ASSEMBLE THE SIGN

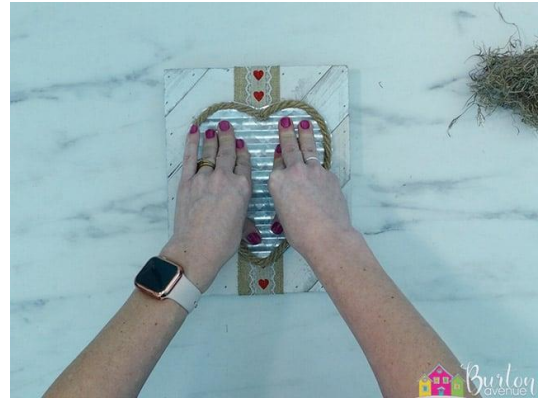
Place the ribbon on the center of the pallet sign..



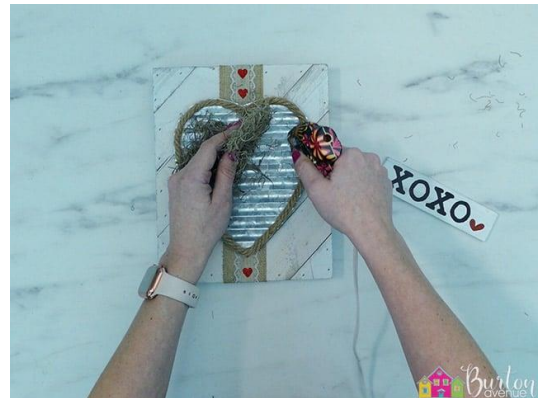
Flip the pallet sign over. Glue the ribbon to the back and trim off the excess on the ends.



Add some hot glue to the back of the corrugated metal heart. Press that onto the center of the wood pallet sign.



Now, Grab a handful of Spanish moss and glue it inside the heart, underneath where you'll put the little wooden sign.



Trim off any moss that is covering the rope.



Position your little wooden sign over the metal heart. It can be straight or angled, both ways look cute. Then, glue the sign onto the rope.



Trim off any moss that looks out of place.



And that's it, this project is finished.

